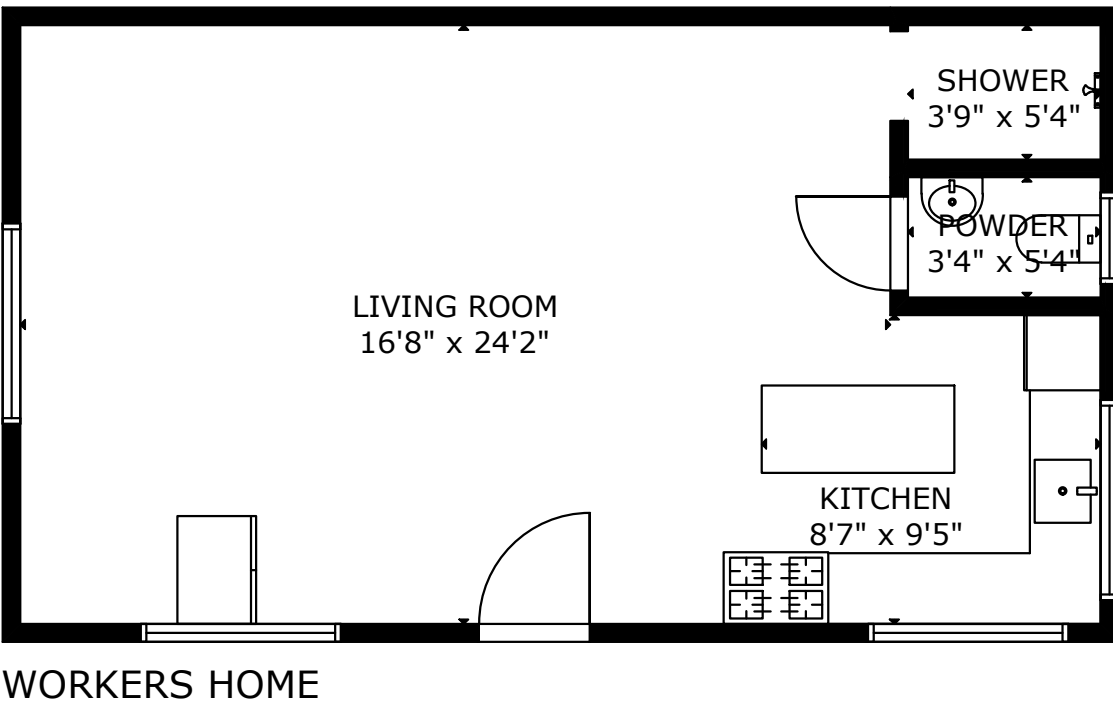
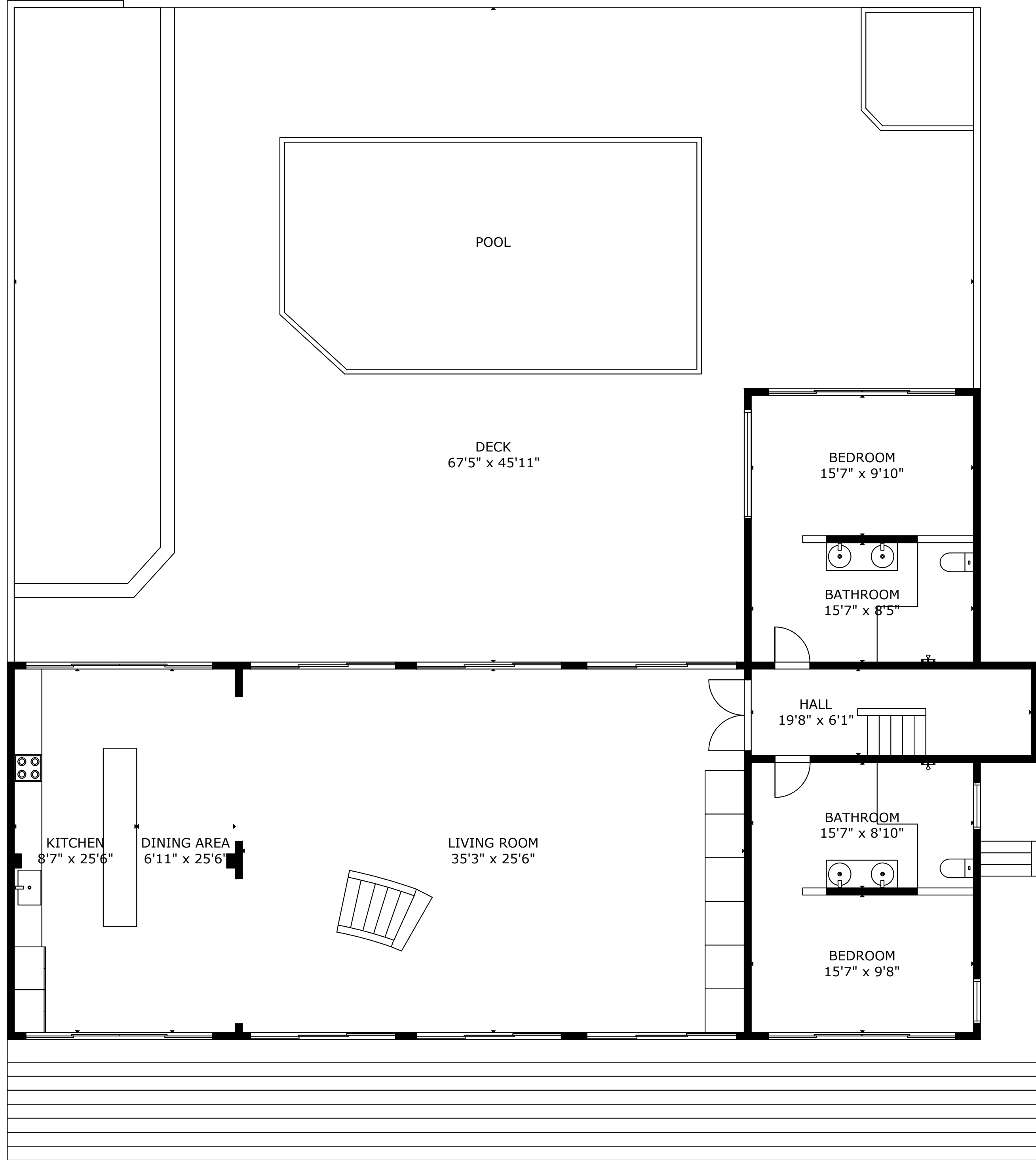


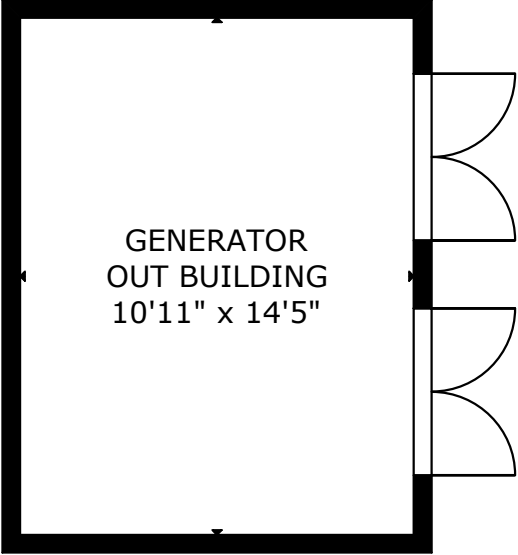
BABY CHIC BUNGALOW



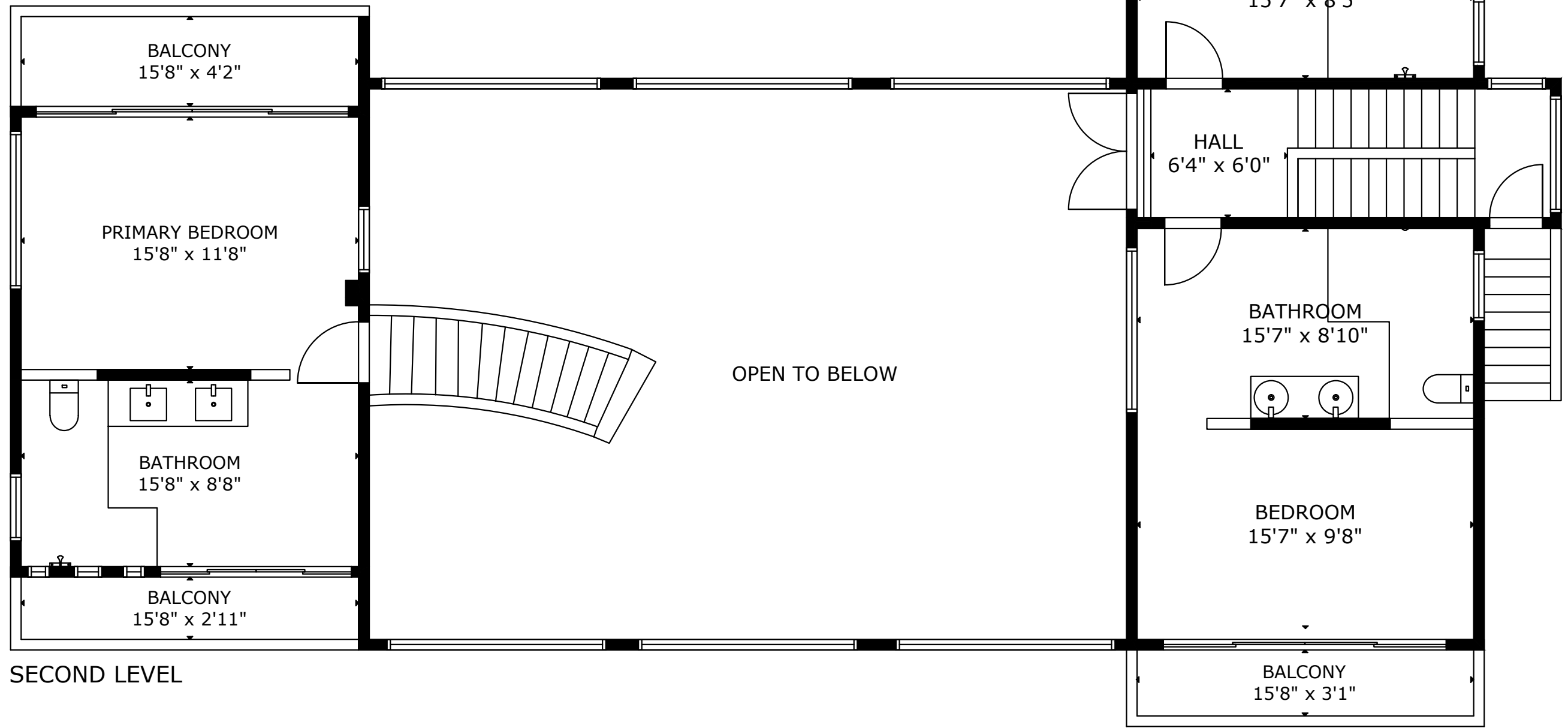
WORKERS HOME



MAIN LEVEL



GENERATOR OUT  
BUILDING



GROSS INTERNAL AREA

TOTAL: 3,156 sq.ft

MAIN LEVEL: 2,044 sq.ft, SECOND LEVEL: 1,112 sq.ft

EXCLUDED AREAS: DECK: 2,787 sq.ft, BALCONY: 203 sq.ft

BABY CHIC BUNGALOW: 323 sq.ft, WORKERS HOME: 500 sq.ft, GENERATOR OUT BUILDING: 157 sq.ft

SIZE AND DIMENSIONS ARE APPROXIMATE, ACTUAL MAY VARY